

Telling Stories

Myth Making

Wit & Wisdom
4th grade
Module 4

© William Reid Ltd.



Telling Stories

Unit Understanding:

Humans use myths and stories to understand unexplained aspects of nature.

When we lose our myths, we lose our place in the universe.

— Madeleine L'Engle



Essential Question

What can we learn from myths and stories?

Suggested Student Understandings

- Humans tell myths and stories to share ideas that are important to them.
- Myths and stories are clues to understanding aspects of the history and culture of a group of people and what they value.
- Myths and stories have multiple layers of meaning.
- Humans use myths and stories to understand unexplained aspects of nature.
- Myths are representative of the journey of the human experience, and different cultures share stories of similar journeys.

Wit & Wisdom Module 4

Telling Stories Unit Overview

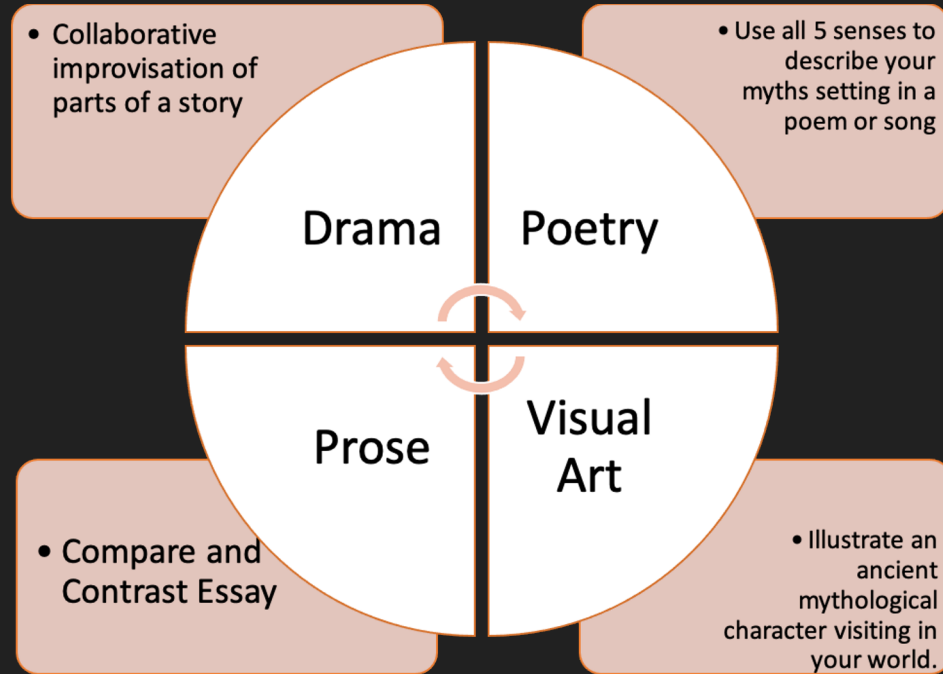
Humans use myths and stories to understand unexplained aspects of nature.

Compare and Contrast myths and their common qualities

How do different art forms in different settings, effect the telling of a myth? Create a poem, a skit and a drawing to tell the Myth in different versions.

Creation and presentation of original myth through the arts

Target 4 Map - Identify the elements of drama, prose and poetry and discuss how they are similar and different. (RL.4.5)



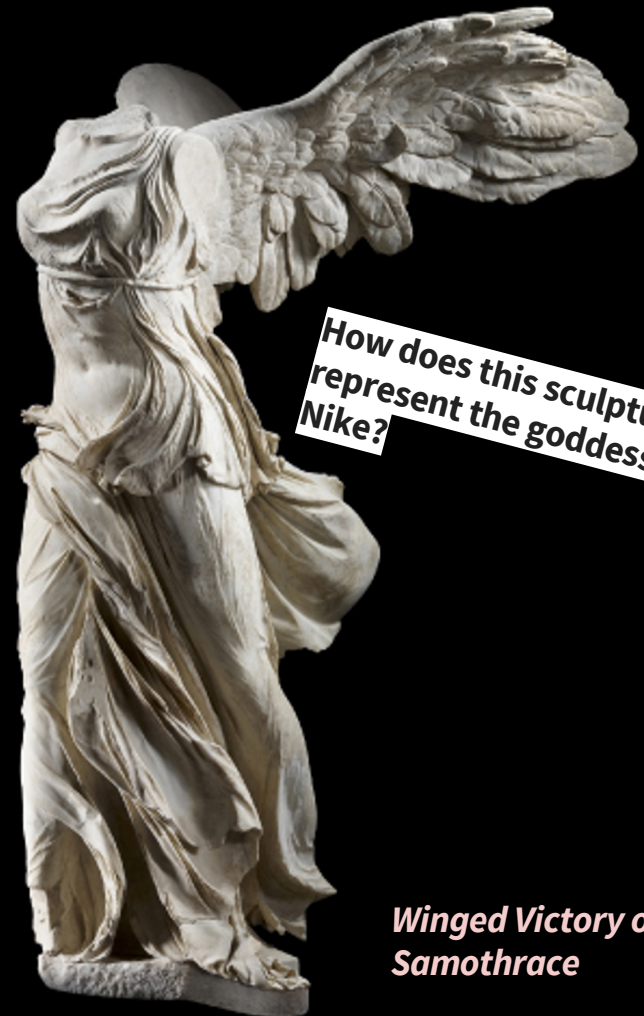
Lesson 13

How might the experience of looking at the sculpture in the museum compare to viewing it in its original site?

How does the fact that it's broken affect our perception?

How might seeing this sculpture in person compare with viewing it in a photograph?

Describe the importance of this sculpture to the ancient Greeks in one sentence

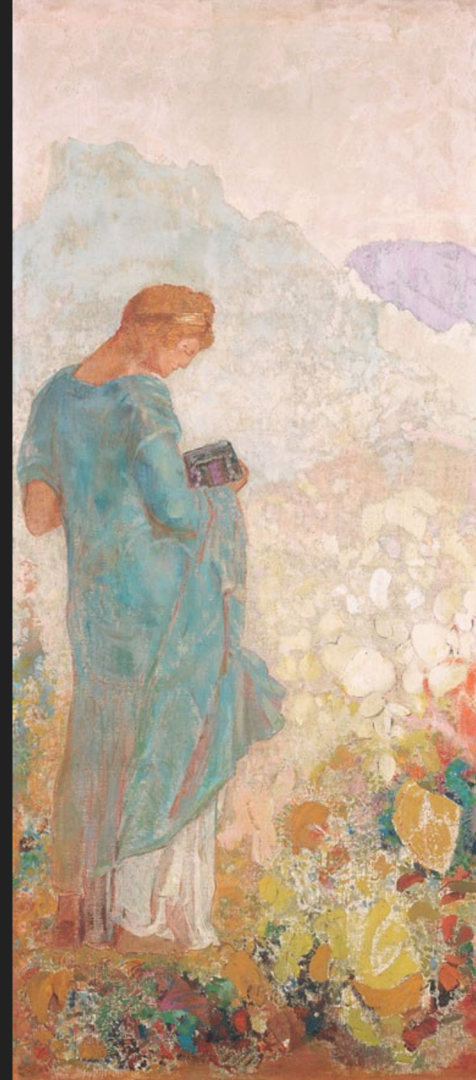


How does this sculpture represent the goddess of Nike?

Winged Victory of Samothrace

Lesson 23

- What do you notice and wonder about these paintings?
- How are they alike? How are they different?
- How do you think these images are connected to what you have been learning?



The Tide Rises, the Tide Falls

BY [HENRY WADSWORTH LONGFELLOW](#)

The tide rises, the tide falls,
The twilight darkens, the curlew calls;
Along the sea-sands damp and brown
The traveller hastens toward the town,
And the tide rises, the tide falls.

Darkness settles on roofs and walls,
But the sea, the sea in the darkness calls;
The little waves, with their soft, white hands,
Efface the footprints in the sands,
And the tide rises, the tide falls.

The morning breaks; the steeds in their stalls
Stamp and neigh, as the hostler calls;
The day returns, but nevermore
Returns the traveller to the shore,
And the tide rises, the tide falls.

Create a Sensory Poem about the setting of your original myth. Use this template to prepare it. Use the opening line for the last line in each stanza

Name: _____ Date: _____

My Sensory Poem

Emotion: _____

Color: _____

Line 1. _____ is _____.

Line 2. It sounds like _____.

Line 3. It smells like _____.

Line 4. It tastes like _____.

Line 5. It looks like _____.

Line 6. It feels like _____.

Final Project: **Humans use myths and stories to understand unexplained aspects of nature.** Using the list below students can choose a contribution and create an origin myth about it, in the tradition of ancient mythology.

Final Project: Students will create a creation myth and a concept map showing the sequence of events and the parts of their story.

Students will present the myth in either a poem, painting or a dramatic skit.

